

INTRODUCING MTX

# ANGULATED SCREW CHANNEL TECHNOLOGY

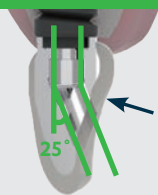
The screw channel of screw-retained restorations is not always in the perfect position to achieve aesthetically pleasing results. Our **Multi-Axial (MTX) Technology** enables dentists to rectify angulation issues by offering freedom of movement from 0° to 25° from the implant axis. This allows some cases that would not have been possible to screw retain, particularly in the maxillary anterior region due to aesthetic requirements, to be screw-retained without compromising aesthetics. With MTX, the screw channel can be placed aesthetically on the palatal side, eliminating the traditional reliance on cement retention in these cases, and the potential associated periodontal issues with residual cement.

## STRAIGHT SCREW CHANNEL

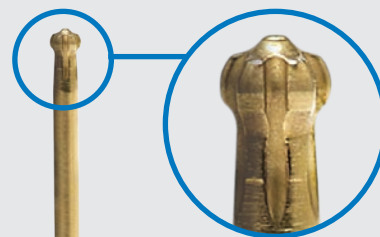


With a straight screw channel, not only are the aesthetics compromised, but also the structural strength as the thickness of the porcelain is affected as well.

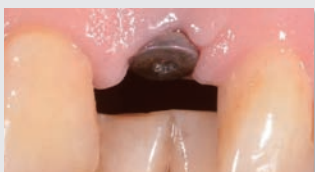
## MTX TECHNOLOGY



With MTX Technology, the screw channel can be angulated. As a result, the aesthetics and design of the porcelain are improved.



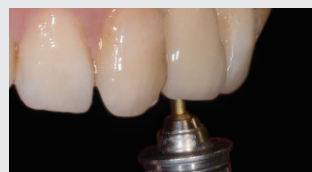
Hexalobular Head



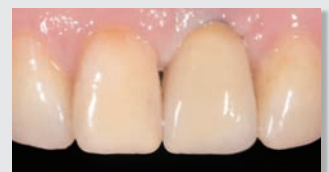
Implant placement for anterior incisor.



Angulation shows that a straight screw channel would result in a screw hole on the labial side.



By using the MTX system, the screw channel can be angulated palatally.



Final prosthesis.

## ALL-INCLUSIVE ANGULATED SCREW CHANNEL BUNDLE

Titanium Base  
(incl. screw)



Analogue



Screw-retained  
Crown

**BUNDLE**  
£299\*/€359\*

Turnaround  
time  
14 working  
days

\* Price includes soft tissue model. Alloy extra. Angulated driver for insertion not included. Driver available from Southern Cross Dental for £49/€59.

## AVAILABLE ABUTMENTS:

### Full-ceramic restoration on MTX abutment

Full ceramic-based restorations are available with MTX abutment. This allows the whole prosthesis to be made of ceramic material (except the small titanium base connection), resulting in maximum aesthetics.



### MTX abutment with titanium or cobalt-chrome case

The entire MTX can be precisely milled with titanium or cobalt-chrome and finished with layered porcelain.



## IMPLANT\* COMPONENT SUMMARY

Brand	System	Platform	MTX † Zirconia	Torque^ Ncm	MTX † Ti/CoCr	Torque^ Ncm	Bridge Angle#
3i Biomet	Certain (BC)	3.4	✓	25	✓	25	40°
		4.1	✓	25	✓	25	40°
		5.0	—	—	✓	25	40°
Dentsply	AstraTech OsseoSpeed (DA)	3.5/4.0	✓	20	✓	20	20°
		4.5/5.0	✓	25	✓	25	20°
	AstraTech EV (DV)	3.6	✓	20	✓	20	20°
		4.2	✓	25	✓	27	20°
		4.8	—	—	✓	27	20°
	Frialit/XIVE (DX)	3.4	✓	20	✓	25	40°
		3.8	✓	20	✓	25	40°
		4.5	—	—	✓	25	40°
5.5		—	—	✓	25	40°	
Nobel Biocare	Replace (NR)	NP	✓	25	✓	25	40°
		RP	✓	25	✓	27	40°
		WP	✓	25	✓	27	40°
	Active/Conical (NA)	6.0	—	—	✓	27	40°
		NP	✓	25	✓	25	40°
	Branemark (NB)	RP	✓	25	✓	27	40°
		NP	✓	20	✓	20	30°
WP		✓	25	✓	27	40°	
Osstem	TS (OT)	Mini	✓	20	✓	27	20°
		Standard	✓	20	✓	27	20°
Straumann	Tissue Level (ST)	RN	✓	25	✓	27	40°
		WN	—	—	✓	27	40°
	Bone Level (SB)	NC	✓	20	✓	25	30°
		RC	✓	20	✓	25	30°
Zimmer	Tapered Screw-Vent (ZT)	3.5	✓	25	✓	27	60°
		4.5	✓	25	✓	27	60°
		5.7	—	—	✓	27	60°

\* If the implant system you use is not on the list, please call us for further information.

† With titanium base sourced from CE approved manufacturers.

^ Recommended screw torque.

# Maximum angle between two implants axis.

‡ One-piece design, precision machined in titanium, CoCr (without metal base).

### PATIENT RECORD CARD

Due to the unique design of the MTX system, only MTX screwdrivers are compatible with the prosthesis. Therefore each MTX systems comes with a personalised patient record card which indicates important information including the implant position and torque value. Clinicians can provide this card to the patients as an added value service.